

THE LAUREL | 2684 SQ FT



MLS #252572

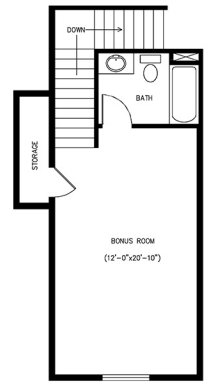
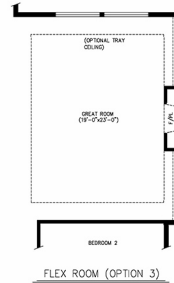
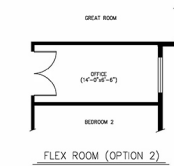
3

3.5

2

STANDARDS INCLUDE:

- 12 ft Ceiling in Living Room
- 10 ft Ceiling Throughout Rest of Home
- Engineered Hardwood in Living Room, Dining Room, Hallway & Kitchen (Main Floor) - 7.5" Plank Width
- 5" White Trim
- Walk-in Closets in Every Room



BONUS ROOM

LEGAL DISCLAIMER FOR FLOOR PLANS & RENDERINGS:

Floor plans and renderings are artist's conception that may vary in detail from actual homes. Room dimensions and square footage are approximate. Peake Homes reserves the right to modify floor plans, elevations, materials, design, and prices at any time.

Retter &
Company

SCHEDULE
A SHOWING

AMANDA POMEROY
Retter & Company Sotheby's International Realty
Realtor®/Broker
509.713.6821
amanda@pomeroyrealty.com

GET
PRE-QUALIFIED

TIM BRIGMAN
HAPO Community Credit Union
Mortgage Loan Officer
509.727.2860
Tim.Brigman@hapo.com

Sotheby's
INTERNATIONAL REALTY