

SAGE CREST



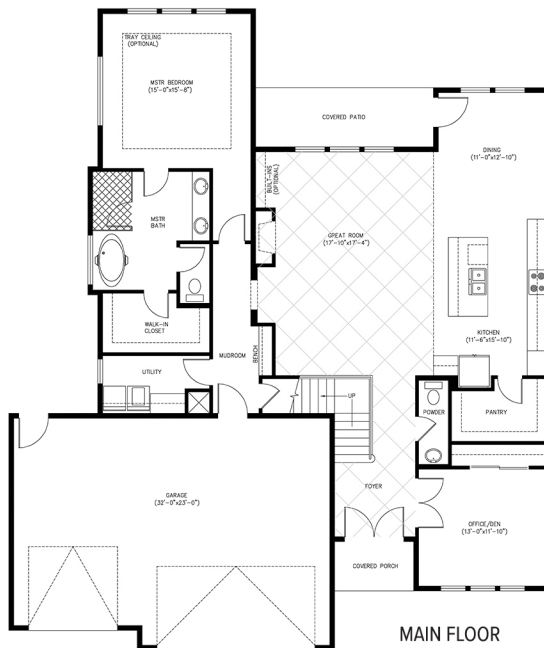
THE FIG — 2936 SQ FT



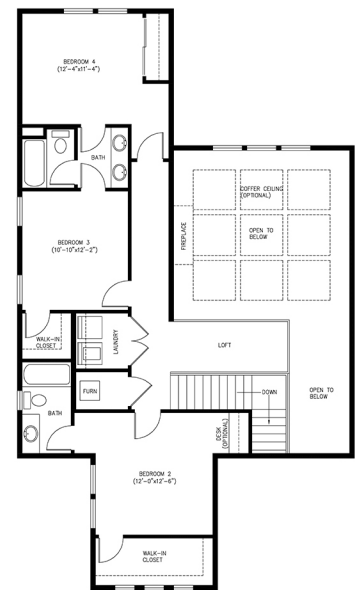
5
 3.5
 3

STANDARDS INCLUDE:

- 10' Ceilings on Main Floor
- 8' Interior Doors
- LVP in Main Floor Living Spaces
- Large Kitchen Island
- 5" White Trim



MAIN FLOOR



UPPER LEVEL

LEGAL DISCLAIMER FOR MARKETING FLOOR PLANS & RENDERINGS:

Floor plans and renderings are draftsman's conception that may vary in detail from actual homes and may show available upgrades. Room dimensions and square footage are approximate and differences in design, layout and features may exist. Peake Homes reserves the right to modify floor plans, elevations, materials, design, and prices at any time.

Retter & Company

SCHEDULE A SHOWING

AMANDA POMEROY
 Retter & Company Sotheby's International Realty
 Realtor®/Broker
 509.713.6821
 amanda@pomeroyrealty.com

GET PRE-QUALIFIED

MARK CARROLL
 Homebridge
 Sales Manager, Mortgage Loan Originator
 509.572.3654
 markcarroll@homebridge.com

Sotheby's INTERNATIONAL REALTY